

STANDARD ARRIVAL CHART-
INSTRUMENT (STAR) - ICAO

TRANSITION ALTITUDE 9000 ft

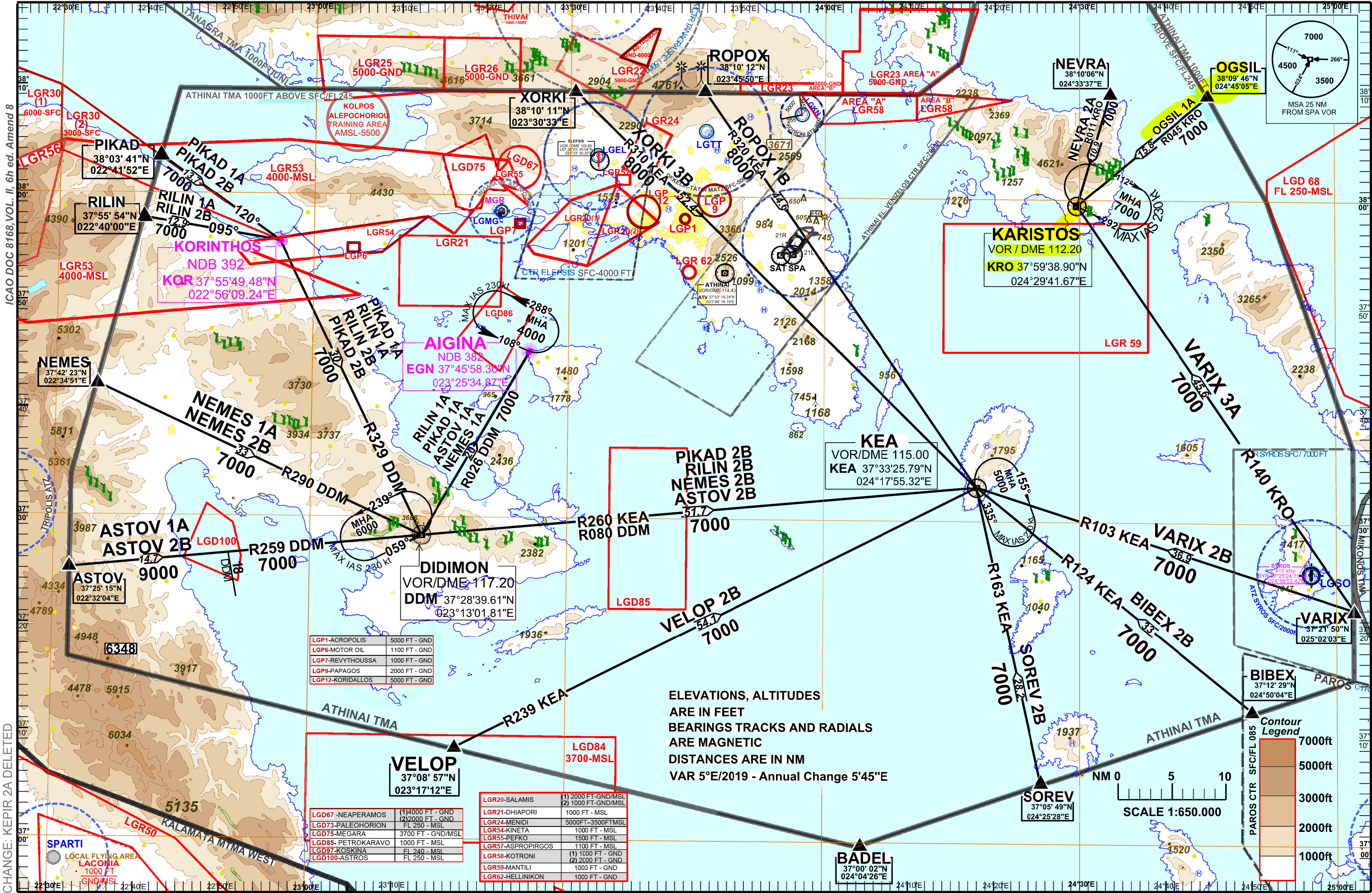
ATIS 136.125

TOWER WEST 136.275
TOWER EAST 118.625

ARRIVAL WEST 119.100
ARRIVAL EAST 126.575

ATHINAI/ELEFTHERIOS VENIZELOS RWY 21 R/L

ASTOV 1A, ASTOV 2B, BIBEX 2B, NEMES 1A,
NEMES 2B, NEVRA 2A, **OGSIL 1A**, PIKAD 1A,
PIKAD 2B, RILIN 1A, RILIN 2B, ROPOX 1B, SOREV 2B,
VARIX 3A, VARIX 2B, VELOP 2B, XORKI 3B.



ICAO DOC 8168, VOL. II, 6th ed. Amend 8

CHANGE: KEP1R 2A DELETED